



21 Aruma Avenue Kellyville NSW

4  2  2 

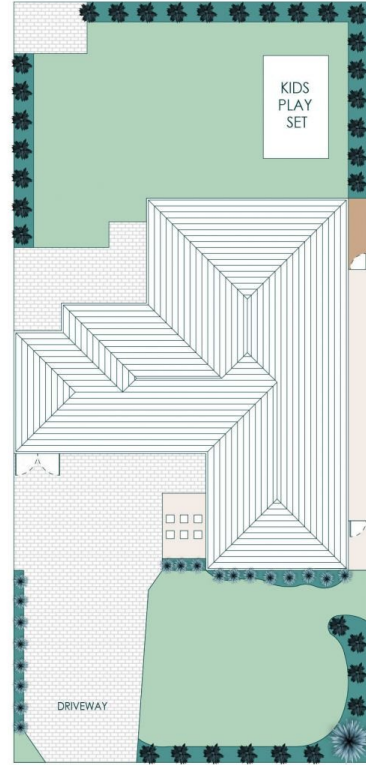
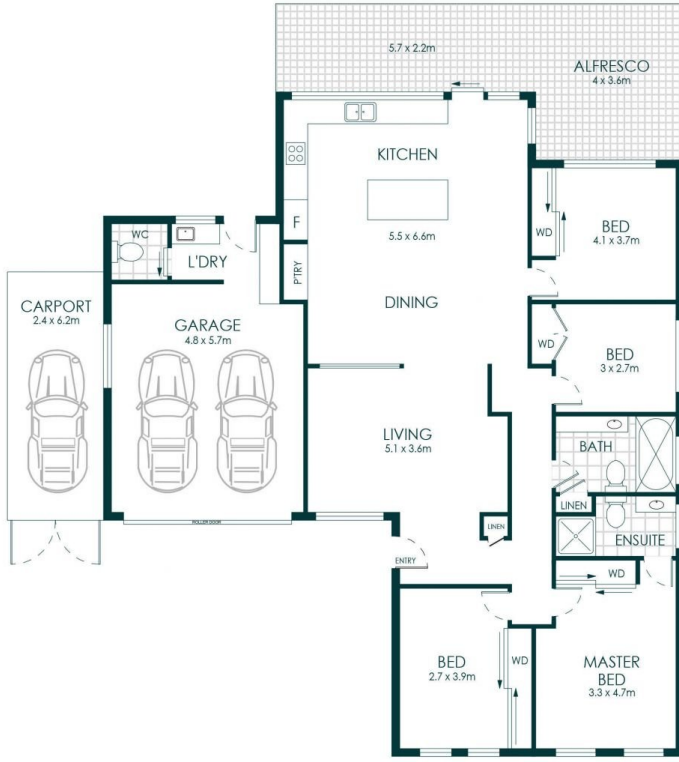
Set in a private leafy setting, positioned on the Castle Hill border, this extremely well-maintained, renovated, character-filled home has so much to offer. With its spacious layout and ample natural light, you'll have the freedom to customise the space to your liking and make it your dream home.

- North-facing, tree lined street
- Fully refurbished kitchen with island bench top and matching stainless-steel appliances
- Beautifully renovated bathrooms
- Four well-scaled bedrooms with built in robes + ensuite in the master bedroom
- Child friendly front & rear backyard
- Beautiful outdoor alfresco entertaining area overlooking the grassy backyard
- Low-maintenance backyard with established gardens

Price : \$1,050
Land Size : 700 sqm
View : <https://www.guardianrealty.com.au/lease/nsw/hills/kellyville/residential/house/8169684>



Daniel Hall
0448 580 039



21 ARUMA AVENUE, KELLYVILLE



Scale in Metres. Indicative only. Dimensions are approximate.
 All information contained here in is gathered from sources we believe to be reliable
 However we cannot guarantee its accuracy and interested persons should rely on their own enquiries.