



guardian



5 Matthew Close Galston NSW

4 2 2

This entry-level acreage address truly offers an abundance of opportunity to design and create the ultimate acreage lifestyle. Hidden behind a private entry framed by established gardens is an original single level home prime for renovation. The sun-soaked residence offers a versatile multi-zoned layout which features a combined family and meals area, formal living and dining spaces, and a rear hobby room or home office. The floorplan is also perfect for those considering multi-generational living, with a second kitchen, bathroom and rumpus room positioned in a separate wing along with an adjoining bedroom.

Ideal for both renovators and families in search of a lifestyle change, this acreage address offers an enviable escape from busy residential living without sacrifice on convenience. This slice of tranquillity is 5 minutes to Galston Shopping Village, 15 minutes to Round Corner

Land Size : 2.228 ha

View : <https://www.guardianrealty.com.au/sale/nsw/hills/galston/residential/acreagesemirural/8114312>



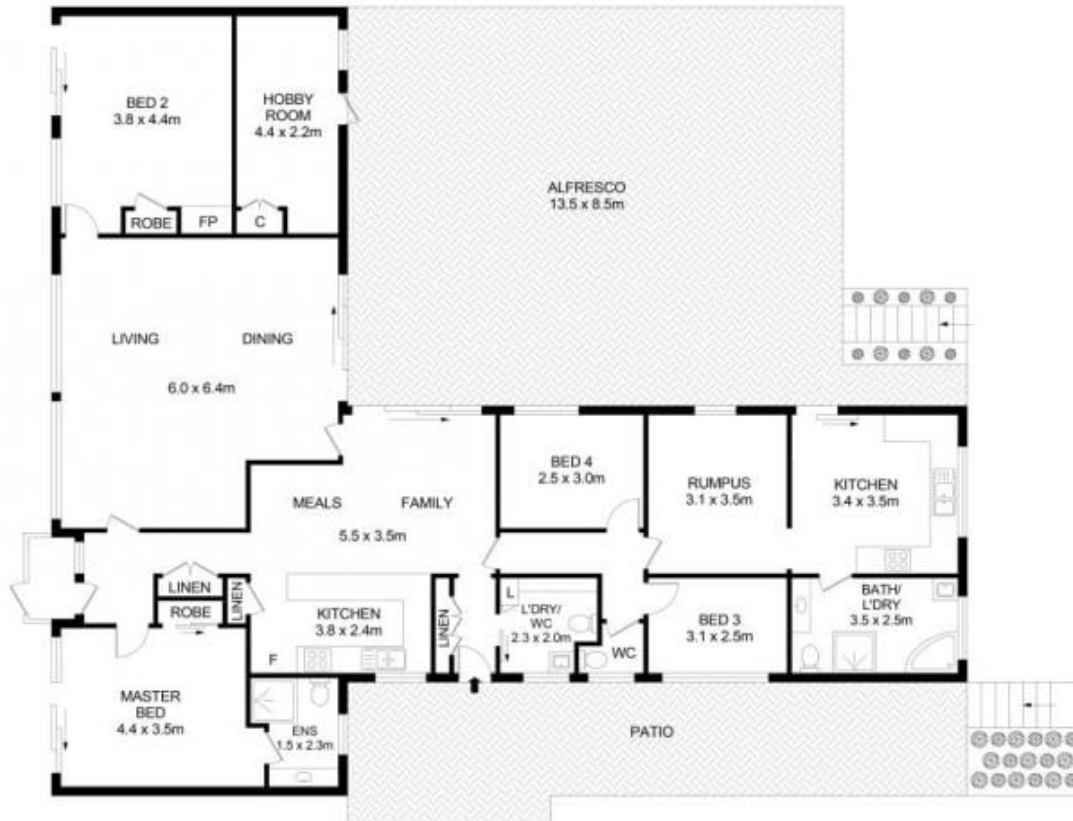
Gavin Weekley
0407 024 600



Josh McAdam
0425 886 484

<https://www.guardianrealty.com.au>

534 Old Northern Road Dural NSW
02 9651 1666



5 Matthew Close, Galston



Disclaimer

Floor Plan measurements are approximate and are for illustrative purposes only. While we cannot doubt the floor plans accuracy, we make no guarantee, warranty or representation as to the accuracy and completeness of the floor plan.