



14 Timothy Avenue Castle Hill NSW

4  2  2 

Tucked away in a leafy and ultra-convenient pocket, this meticulously maintained residence is an ideal choice for families in search of the ultimate Hills lifestyle. Spread over a dual level design with living zones on both levels, the home promises flexibility for growing families. An open lounge and dining zone upstairs opens to a private balcony to relish the leafy surrounds while a family room downstairs transitions to a generous covered entertaining area ideal for alfresco dining. Caesarstone benchtops and sleek cabinetry frame the gourmet kitchen which features an island benchtop, modern cooking appliances and views over the tranquil rear yard.

Formal accommodation is comprised of four well-sized bedrooms with built-in wardrobes, with three of the bedrooms located on the upper level for easy family living. An impeccably renovated bathroom featuring floor-to

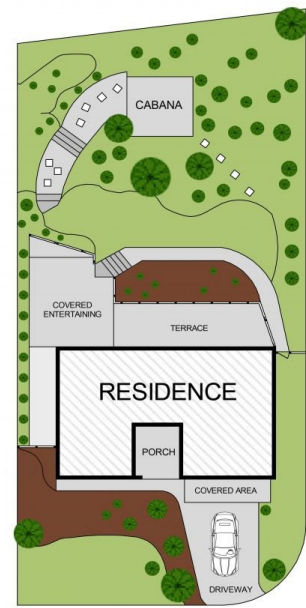
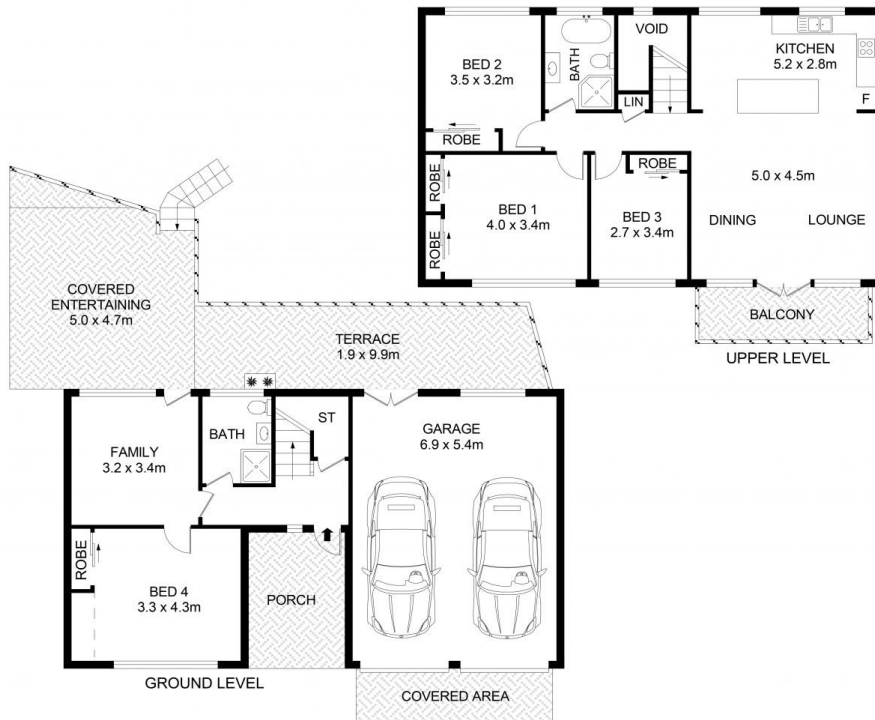
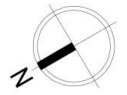
Price : \$1,800,000 - \$1,900,000
Land Size : 701 sqm
View : <https://www.guardianrealty.com.au/sale/nsw/hills/castle-hill/residential/house/8075481>



Simon Kowald
0407 433 660



Luke Browning
0431 378 280



SITE PLAN
(NOT TO SCALE)

14 Timothy Avenue, Castle Hill



Disclaimer

Floor Plan measurements are approximate and are for illustrative purposes only. While we cannot doubt the floor plans accuracy, we make no guarantee, warranty or representation as to the accuracy and completeness of the floor plan

