



## 4a Gindurra Avenue Castle Hill NSW

3  2  2 

Featuring an ideal North-to-rear aspect and easy-care gardens, this immaculate duplex is a delight for those seeking easy-care living with a flawless flow to outdoor entertaining. Spread over two light-saturated levels, the floorplan offers a formal living and dining zone on entry, as well as an open family zone at the rear. The large kitchen is framed by sleek benchtops and cabinetry, features an abundance of cupboard space and brand-new, stainless-steel cooking appliances. Glass sliders from the rear family zone open to an oversized covered decking ideal for entertaining family and friends while relishing the outlook of the private, manicured backyard.

Upstairs boasts three large bedrooms with integrated storage in each. The master enjoys the luxury of an ensuite while a spacious main bathroom serves the other two bedrooms. This ultra-convenient address is a short stroll to

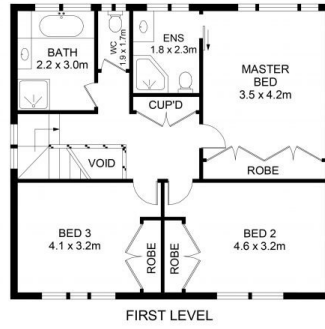
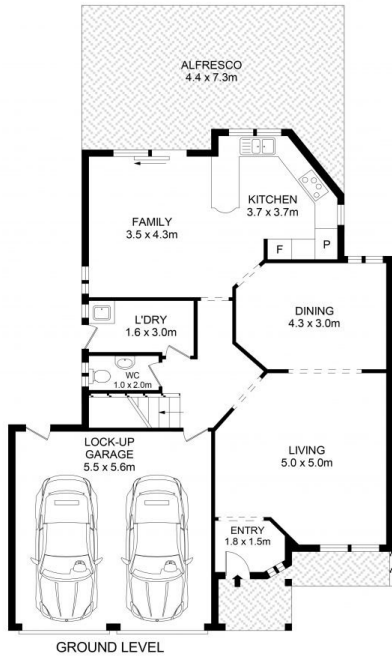
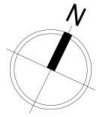
**Price** : \$ 1,600,000  
**Land Size** : 359 sqm  
**View** : <https://www.guardianrealty.com.au/sale/nsw/hills/castle-hill/residential/semi-detached/8039876>



**Benjamin See**  
0410 264 809



**Grant McEnally**  
0414 968 460



## 4A Gindurra Avenue, Castle Hill



### Disclaimer

Floor Plan measurements are approximate and are for illustrative purposes only. While we cannot doubt the floor plans accuracy, we make no guarantee, warranty or representation as to the accuracy and completeness of the floor plan

