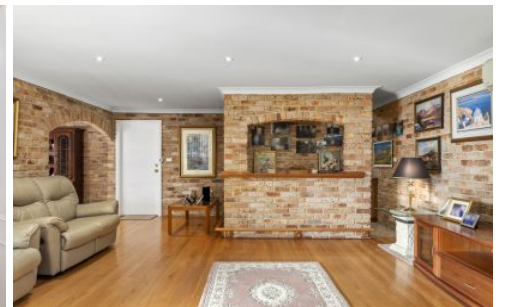




guardian



23 Bennett Place Castle Hill NSW

5 3 2

Set on a large parcel just moments from Castle Towers, this generous dual level residences offers a multi-zoned floorplan to be appreciated by growing families. The grand entry opens to a formal living and dining area to the right, where exposed brick walls add a touch of charm to the sophisticated layout. A family and meals zone at the rear flows through to the generous rumpus room which includes a bar for ultimate entertaining. The updated kitchen features stone benchtops, an island bench setting, modern cooking appliances and a built-in pantry. Glass sliders open from both the rear rumpus zone and meals area to an enormous covered alfresco ideal for entertaining. The private backyard also includes a resort-style pool, shed and manicured lawns.

An upstairs sitting room with balcony access offers potential as a study nook. Formal accommodation on the

Price : Auction
Land Size : 910 sqm
View : <https://www.guardianrealty.com.au/sale/nsw/hills/castle-hill/residential/house/8036668>



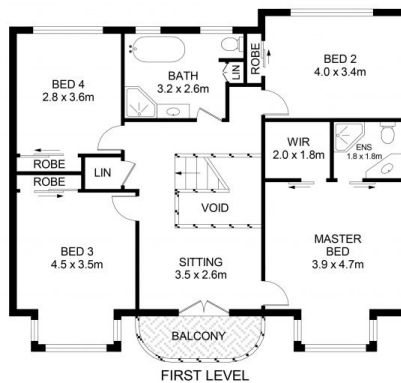
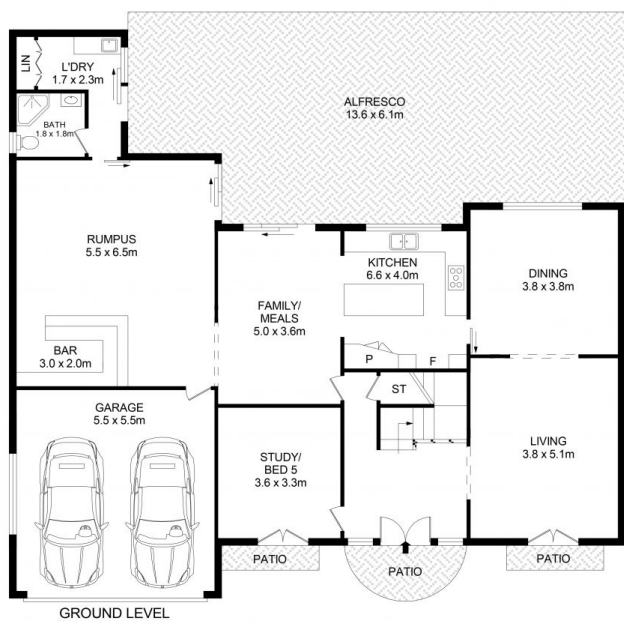
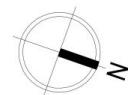
Aaron Godfrey
0422 081 888



Sam Schwarz
0423 731 015

<https://www.guardianrealty.com.au>

258 Old Northern Road Castle Hill NSW
02 9659 5222



23 Bennet Place, Castle Hill

Disclaimer

Floor Plan measurements are approximate and are for illustrative purposes only. While we cannot doubt the floor plans accuracy, we make no guarantee, warranty or representation as to the accuracy and completeness of the floor plan



guardian