



2 Rosebery Road Kellyville NSW

4  3  2 

Offering first-class living in an ultra-convenient locale, this expansive residence is an absolute masterpiece impeccably designed for growing families and keen entertainers. Exceptional street presence opens to a flawless, multi-zoned floorplan complete with luxurious touches and premium fixtures throughout. The grand entry opens to an oversized formal living space which enjoys the ambience of a feature fireplace, with French doors to the left leading to a breathtaking family and dining zone which adjoins the kitchen. Centrally-set to maximise entertaining opportunity, the state-of-the-art kitchen boasts marble-look benchtops, sleek cabinetry, modern stainless-steel cooking appliances and a large butler's pantry to conceal mess. Bi-fold doors from the rear offer seamless transition to alfresco dining while relishing the private yard and fire pit space.

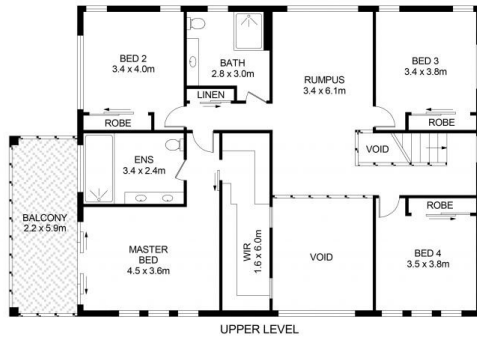
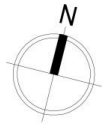
Price : Price Guide \$2,400,000
Land Size : 548 sqm
View : <https://www.guardianrealty.com.au/sale/nsw/hills/kellyville/residential/house/8022286>



Simon Kowald
0407 433 660



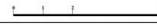
Luke Browning
0431 378 280



2 Rosebery Road, Kellyville

Disclaimer

Floor Plan measurements are approximate and are for illustrative purposes only. While we cannot doubt the floor plans accuracy, we make no guarantee, warranty or representation as to the accuracy and completeness of the floor plan



guardian