



**33 Woodhill Street Castle Hill NSW**

4  2  2 

Occupying an enviable high-side position within the sought-after East Excelsior estate, this gorgeous home promises a dreamy Hills lifestyle. Enjoys views over the local district from the front balcony and large windows, or hosting guests in the charming formal living and dining zone. Boasting Cathedral ceilings and exposed brick feature walls, the home features the perfect balance of formal and informal living with a seamless flow through to alfresco dining. Quality Caesarstone benchtops frame the gourmet kitchen which includes modern stainless-steel cooking appliances, a built-in pantry and plenty of cupboard space. Outdoors exudes a relaxed resort-style feel, with a saltwater pool surrounded by established gardens to maximise shade and privacy offering an ideal place to spend the warmer months.

**Land Size** : 1223 sqm

**View** : <https://www.guardianrealty.com.au/lease/nsw/hills/castle-hill/residential/house/7992241>

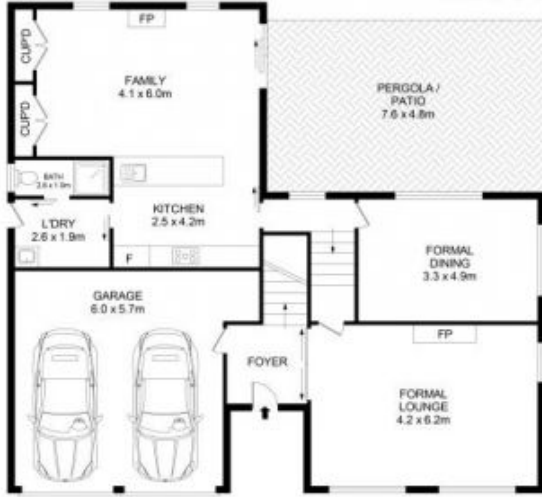


**Daniel Hall**  
**0448 580 039**

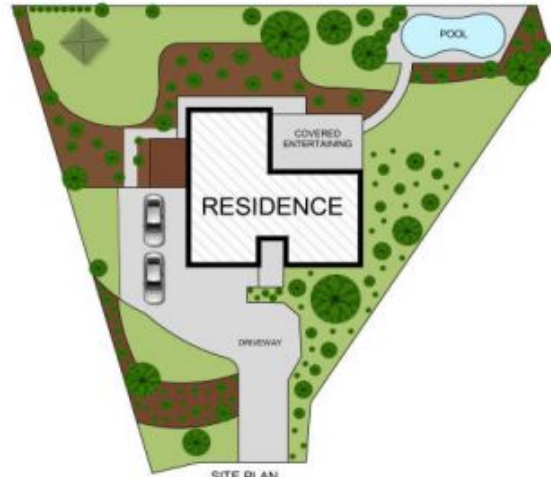
Each of the four bedrooms are located on the upper level



FIRST LEVEL



GROUND LEVEL



SITE PLAN  
(NOT TO SCALE)

**Disclaimer**

Floor Plan measurements are approximate and are for illustrative purposes only. While we cannot doubt the floor plans accuracy, we make no guarantee, warranty or representation as to the accuracy and completeness of the floor plan.

