

12 Baldwin Street Marsden Park NSW

5  3  2 

Boasting exceptional street appeal, this modern residence offers perfectly crafted living spaces and a floorplan suited to multi-generational living. Spread over two light-filled levels, the multi-zoned layout features open plan living with seamless flow through to entertaining on the rear alfresco. A front lounge room, guest bedroom and full bathroom are set within their own wing, making in-law or guest accommodation easy. Caesarstone benchtops frame the gourmet kitchen which includes a walk-in pantry, extra-long island bench setting and quality SMEG cooking appliances.

Price : \$ 1,327,000
Land Size : 350 sqm
View : <https://www.guardianrealty.com.au/sale/nsw/western-sydney/marsden-park/residential/house/7674794>

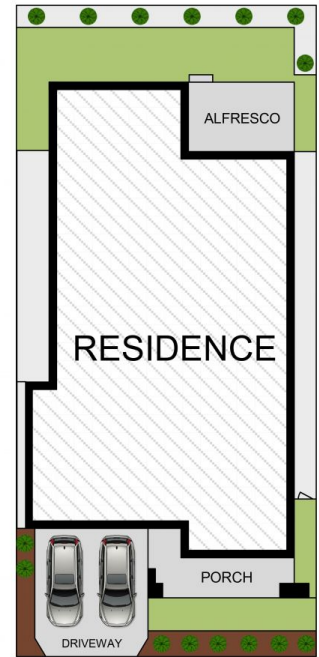
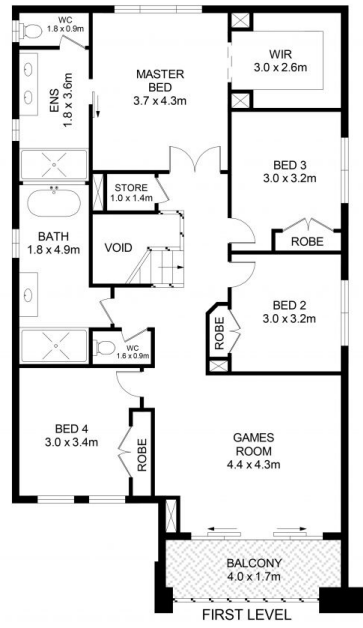
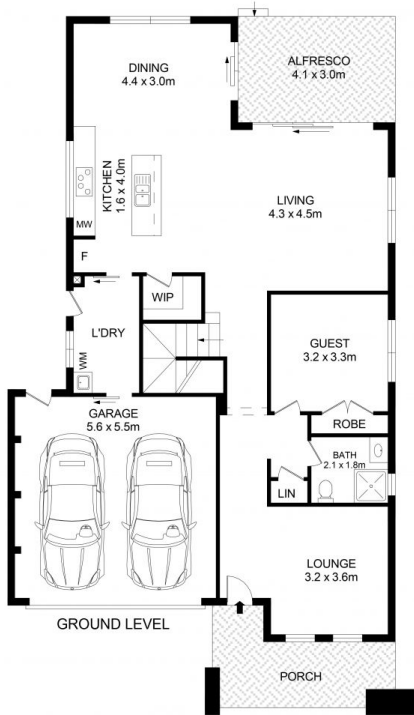
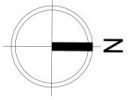
An upstairs games room with access to a Juliet-style balcony connects four well-sized bedrooms with integrated storage included in each. A contemporary ensuite featuring a double vanity serves the master suite while the main bathroom includes a free-standing tub, floor-to-ceiling tiles



Luke Bavaro
0488 093 292



Nathan Gilmour
0488 025 900



SITE PLAN
(NOT TO SCALE)

12 Baldwin Street, Marsden Park



Disclaimer

Floor Plan measurements are approximate and are for illustrative purposes only. While we cannot doubt the floor plans accuracy, we make no guarantee, warranty or representation as to the accuracy and completeness of the floor plan

