



51 Connaught Circuit Kellyville NSW

4  2  2 

Occupying a prized address within a peaceful yet convenient pocket, this spotless Eden Brae home is epitomised by both quality and space. Spread over a flexible single level design which boasts light-filled living and entertaining zones, the residence is an ideal choice for family living or downsizers. A formal lounge zone is complete with the ambience of a fireplace, while an open family and rumpus zone neatly wraps the home. Generous bench space, plenty of cupboard space, a built-in pantry and modern cooking appliances all feature in the gourmet kitchen. Glass sliders from the dining zone offer seamless flow to enjoying a meal on the covered entertaining patio while overlooking the child-friendly backyard.

Formal accommodation is made up of four well-sized bedrooms with integrated storage included in each. The master bedroom is set at the front of the home, enjoys the

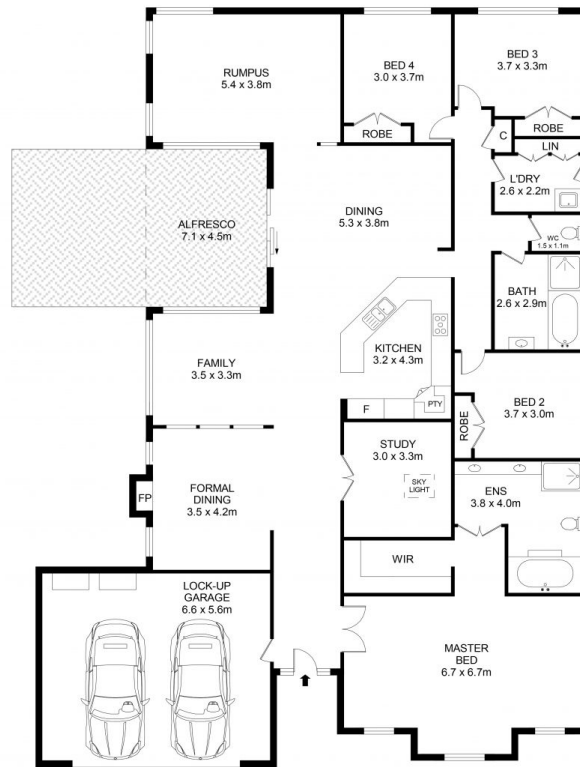
Price : \$ 1,882,500
Land Size : 615 sqm
View : <https://www.guardianrealty.com.au/sale/nsw/hills/kellyville/residential/house/7563275>



Luke Bavaro
0488 093 292



Nathan Gilmour
0488 025 900



51 Connaught Circuit, Kellyville

Disclaimer

Floor Plan measurements are approximate and are for illustrative purposes only. While we cannot doubt the floor plans accuracy, we make no guarantee, warranty or representation as to the accuracy and completeness of the floor plan



guardian