

7 Minerva Crescent Beaumont Hills NSW

4  2  2 

Perfectly positioned opposite a bushland reserve and cycling tracks, this immaculate residence is both grand and spacious throughout. Designed and refreshed to suit growing families, the home offers a multi-zoned floorplan which includes a formal lounge and dining zone complete with the ambience of a fireplace, and an open plan meals and family room. Ready for ultimate movie nights, an incredible two-tiered cinema room with ten recliners, Dolby atoms surround sound, casino grade carpet, 4k 3D projector and acoustic panelling is located on the upper level. The large kitchen includes a walk-in pantry, island bench, modern cooking appliances and ample storage. A covered alfresco offers space for dinner parties while a new mineral pool which includes a 2m x 2m spa area completes the package as an enviable entertainer.

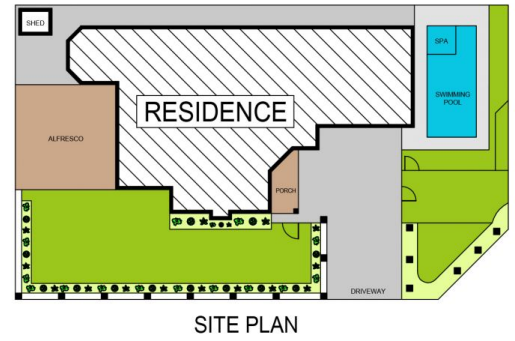
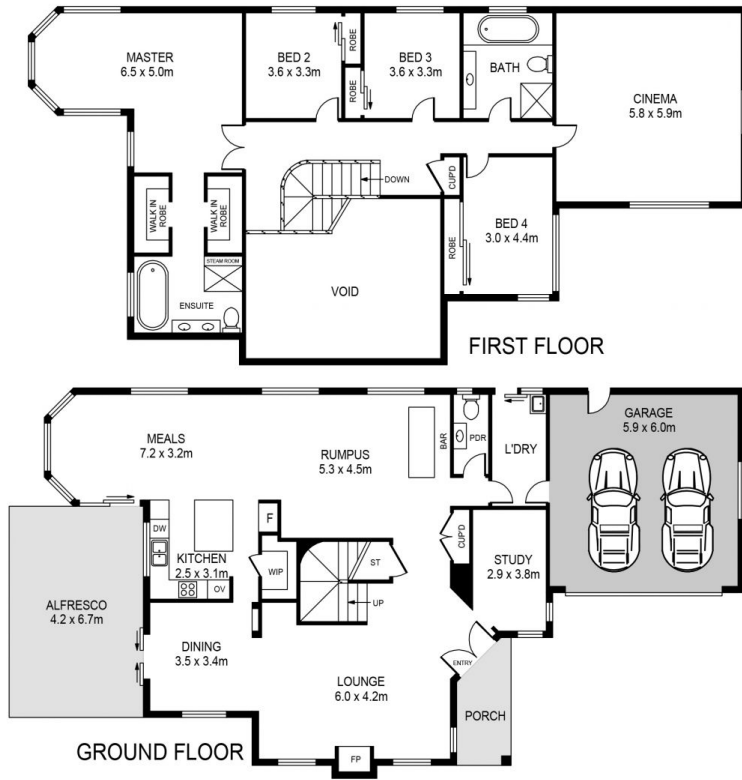
Price : \$ 1,950,000
Land Size : 532 sqm
View : <https://www.guardianrealty.com.au/sale/nsw/hills/beaumont-hills/residential/house/7530345>



Luke Bavaro
0488 093 292



Nathan Gilmour
0488 025 900



7 MINERVA CRESCENT, BEAUMONT HILLS

DISCLAIMER:
 PLANS SHOWN ARE FOR MARKETING PURPOSES ONLY. ALL DIMENSIONS ARE APPROXIMATE AND NOT TO SCALE. THEY ARE SUBJECT TO ERRORS AND INACCURACIES AND NO LIABILITY WILL BE ACCEPTED. INTERESTED PARTIES SHOULD MAKE THEIR OWN INQUIRIES.

