



### 13 Gilham Street Castle Hill NSW

3  2  1 

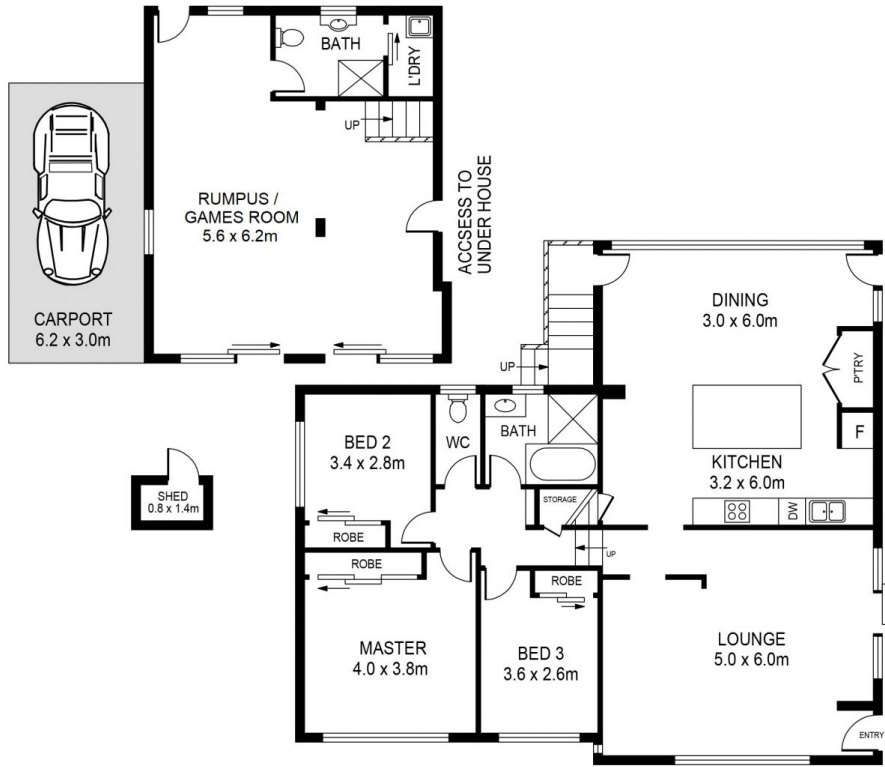
Enjoying a near north to rear aspect in the heart of Castle Hill, this well presented brick veneer home offers a slice of Hills serenity. Boasting a native landscaped front courtyard, providing a private escape in the midst of an ultra convenient location, the multi-zoned floorplan is sun-drenched and versatile to cater for a variety of families. A generous lounge zone on entry exudes an immediate feel of relaxation and warmth, while an open meals zone adjoins the refreshed kitchen featuring Miele appliances. The backyard is a peaceful haven for children and pets to enjoy, with multiple courtyards and established trees offering both privacy and shade.

Three well-sized bedrooms with built-in wardrobes make up the formal accommodation of the home. A renovated main bathroom featuring a neutral colour palette and quality fittings serves the main level of the home, while an

**Price** : \$ 1,870,000  
**Land Size** : 696 sqm  
**View** : <https://www.guardianrealty.com.au/sale/nsw/hills/castle-hill/residential/house/7466732>



**Grant McEnally**  
 0414 968 460



SITE PLAN

## 13 GILHAM STREET, CASTLE HILL

**DISCLAIMER:**

PLANS SHOWN ARE FOR MARKETING PURPOSES ONLY. ALL DIMENSIONS ARE APPROXIMATE AND NOT TO SCALE. THEY ARE SUBJECT TO ERRORS AND INACCURACIES AND NO LIABILITY WILL BE ACCEPTED. INTERESTED PARTIES SHOULD MAKE THEIR OWN INQUIRIES.

