



22 Adam Place Glenhaven NSW

4  3  2 

Enjoying true serenity and a gorgeous bush backdrop, this expansive residence is ready for transformation into an enviable family retreat. Full of both character and charm, high vaulted ceilings line the living spaces while large windows allow an abundance of natural light through the home. The ground floor offers a flexible layout featuring a formal lounge and dining zone, open meals area and large rumpus room with balcony access. Centrally set between the living spaces, the kitchen has a renovation-friendly layout featuring plenty of cupboard space and modern cooking appliances. Outside, a stunning resort-style pool area is set amongst the established surroundings, with plenty of space left to add a cabana and barbecue area to enjoy with family and friends.

The upper-level boasts four queen-sized bedrooms with integrated storage in each. An ensuite adds luxury to the

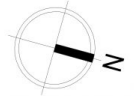
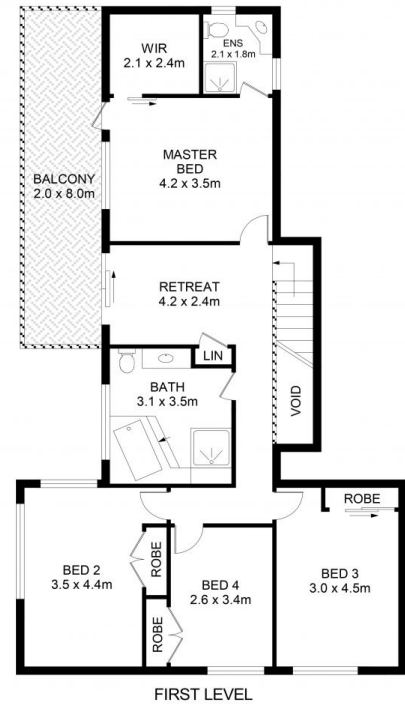
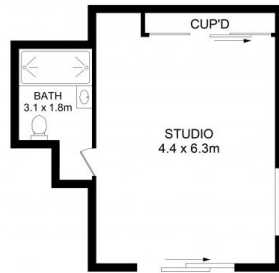
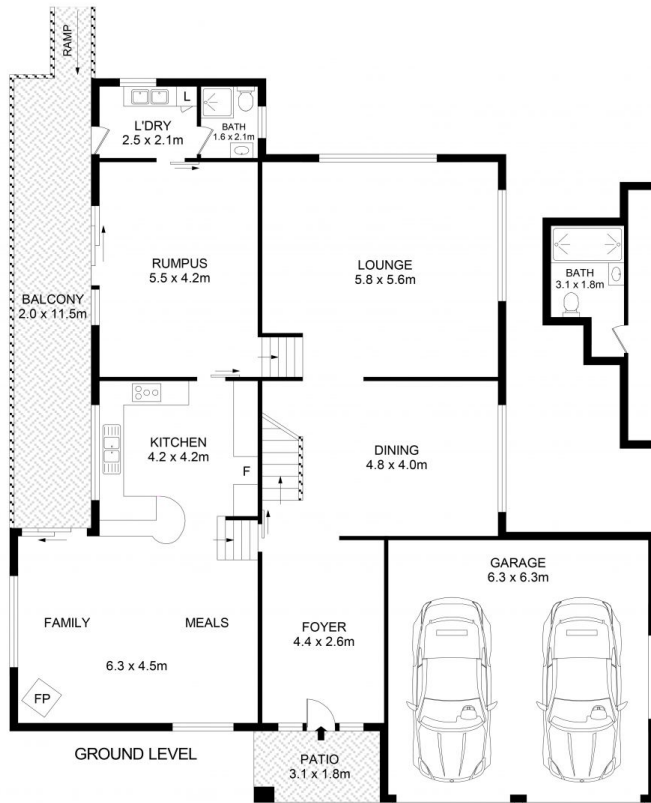
Price : \$ 2,300,000
Land Size : 4010 sqm
View : <https://www.guardianrealty.com.au/sale/nsw/hills/glenhaven/residential/house/7445843>



Stephen Giacomelli
0413 360 777



Daniel Toms
0448 013 566



22 Adam Place, Glenhaven

Disclaimer

Floor Plan measurements are approximate and are for illustrative purposes only. While we cannot doubt the floor plans accuracy, we make no guarantee, warranty or representation as to the accuracy and completeness of the floor plan

