



### 10/11 Harrington Avenue Castle Hill NSW

4  2  2 

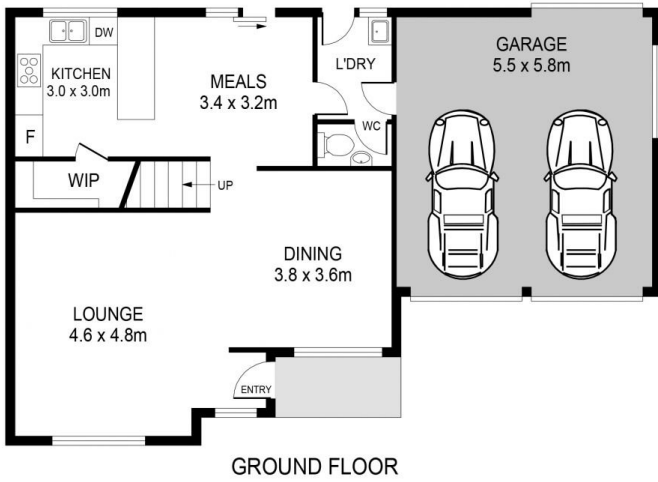
Located in a peaceful and secure complex, this townhouse promises a low maintenance and convenient Hills lifestyle. Spread over two light-filled levels, the floorplan boasts an open plan living space as well as an informal meals area. The generous kitchen features a walk-in pantry, granite benchtops, plenty of cupboard space and a gas cooktop. Glass sliders from the meals area open to an easy-care paved area which relishes the privacy created from established trees.

Upstairs, four well-sized bedrooms with integrated storage make up the formal accommodation of the home. Both the second and third bedroom enjoy access to private Juliet style balconies while the master bedroom has the added luxury of an ensuite with a bathtub. This central address is a short stroll from St Angela's Primary School, Kellyville Village, buses and parks. It's also moments from

**Price** : \$ 1,280,000  
**Land Size** : 350 sqm  
**View** : <https://www.guardianrealty.com.au/sale/nsw/hills/castle-hill/residential/townhouse/7440521>



**Grant McEnally**  
**0414 968 460**



10/11 HARRINGTON AVENUE, CASTLE HILL

**DISCLAIMER:**  
PLANS SHOWN ARE FOR MARKETING PURPOSES ONLY. ALL DIMENSIONS ARE APPROXIMATE AND NOT TO SCALE. THEY ARE SUBJECT TO ERRORS AND INACCURACIES AND NO LIABILITY WILL BE ACCEPTED. INTERESTED PARTIES SHOULD MAKE THEIR OWN INQUIRIES.

