



52 Laughton Crescent Kellyville NSW

4  2  2 

Supremely located in a peaceful Kellyville cul-de-sac, this immaculate residence offers a low maintenance and convenient Hills lifestyle. The multi-zoned floorplan boasts a lounge room to the right of the entry, while a generous open living and dining zone flows seamlessly to the grand alfresco. Caesarstone benchtops frame the gourmet kitchen which includes a gas cooktop, wine storage, island bench setting and a built-in pantry. Glass sliders open to a covered alfresco ideal for outdoor dining or dinner parties and grassy backyard.

A children's playroom connects the four well-sized bedrooms, which each inclusive of built-in storage. The master suite enjoys the privacy of a chic ensuite with a double vanity and backyard access, while a generous main bathroom serves the other bedrooms. This address is moments from buses, metro, local schools, shops and

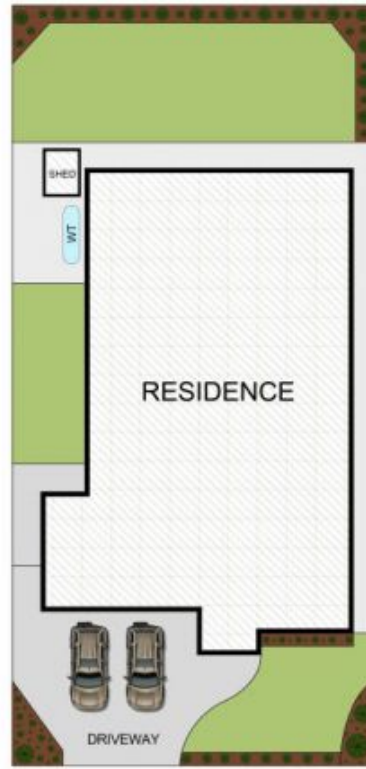
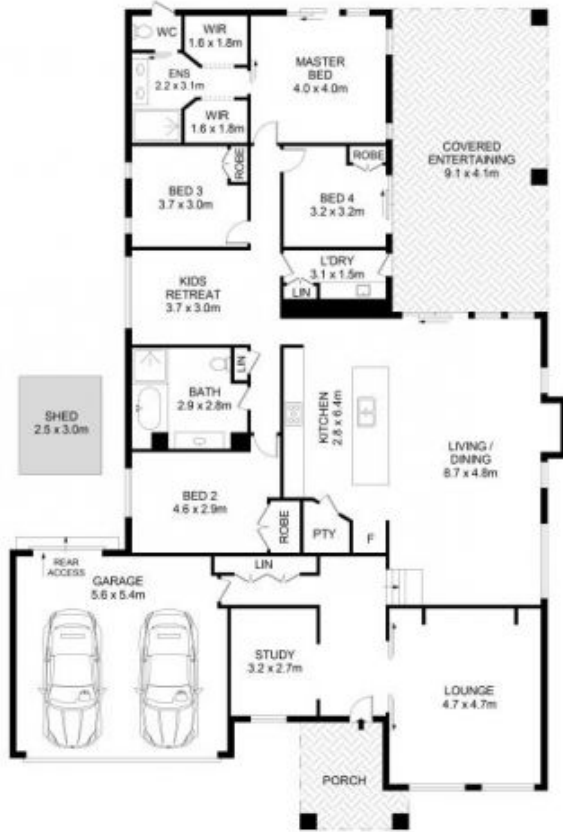
Price : \$ 2,380,000
Land Size : 700 sqm
View : <https://www.guardianrealty.com.au/sale/nsw/hills/kellyville/residential/house/7333409>



Daniel Toms
0448 013 566



Stephen Giacomelli
0413 360 777



SITE PLAN
(NOT TO SCALE)



52 Laughton Crescent, Kellyville

Disclaimer

Floor Plan measurements are approximate and are for illustrative purposes only. While we cannot doubt the floor plans accuracy, we make no guarantee, warranty or representation as to the accuracy and completeness of the floor plan.

