



## 13 Jaffa Road Dural NSW

3  1  1 

Set in the heart of Dural, this house is ideal for growing family. Occupying an ultra-convenient location within walking distance to Round Corner Dural shops and buses, this neat residence is ready for you. The home is immaculate throughout and offers a versatile design with plenty of renovation potential. A neat kitchen is set behind the open plan living and dining zone while a large backyard offers plenty of space for kids and pets to play.

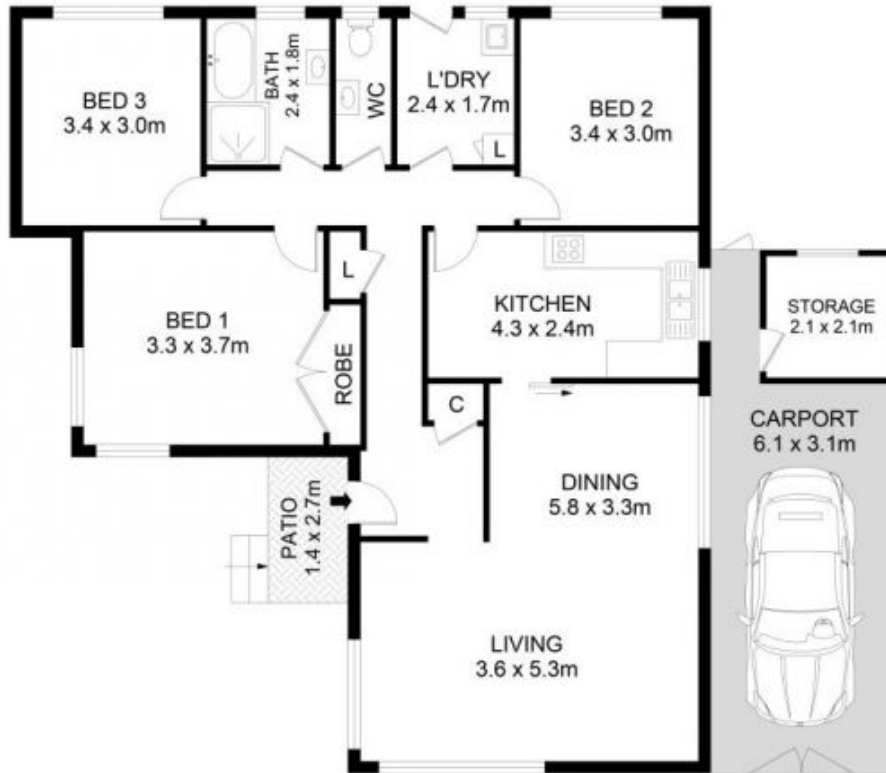
Three well-sized bedrooms make up the formal accommodation of the home, with the master suite featuring a built-in wardrobe. A centrally located main bathroom with a separate toilet serves the home. This leafy address is only ten minutes to Castle Towers and metro and is surrounded by several elite schools.

**Land Size** : 696 sqm  
**View** : <https://www.guardianrealty.com.au/lease/nsw/hills/dural/residential/house/7321853>



**Daniel Hall**  
**0448 580 039**

? Easy-care block of land



## 13 Jaffa Road, Dural



### Disclaimer

Floor Plan measurements are approximate and are for illustrative purposes only. While we cannot doubt the floor plans accuracy, we make no guarantee, warranty or representation as to the accuracy and completeness of the floor plan.

**guardian**  
realty