



407/10 Grassland Street Rouse Hill NSW

3  2  2 

Enjoying position in a proud complex, this spacious apartment offers an easy-care lifestyle within walking distance of Tallawong metro station. Large windows allow an abundance of natural light through the spacious open plan living and dining zone, highlighting the neutral colour palette and quality inclusions. Caesarstone benchtops frame the gourmet kitchen which includes a built-in pantry, stainless-steel cooking appliances and plenty of storage. Glass sliders from the living zone open to a covered balcony ideal for catching the sunshine or afternoon breeze.

Three generously sized bedrooms with built-in wardrobes are set in their own wing. The master bedroom enjoys the luxury of a modern ensuite while both the second and third bedroom have balcony access. A chic main bathroom with floor-to-ceiling tiles and a bathtub serves the remainder of

Price : \$ 840,000

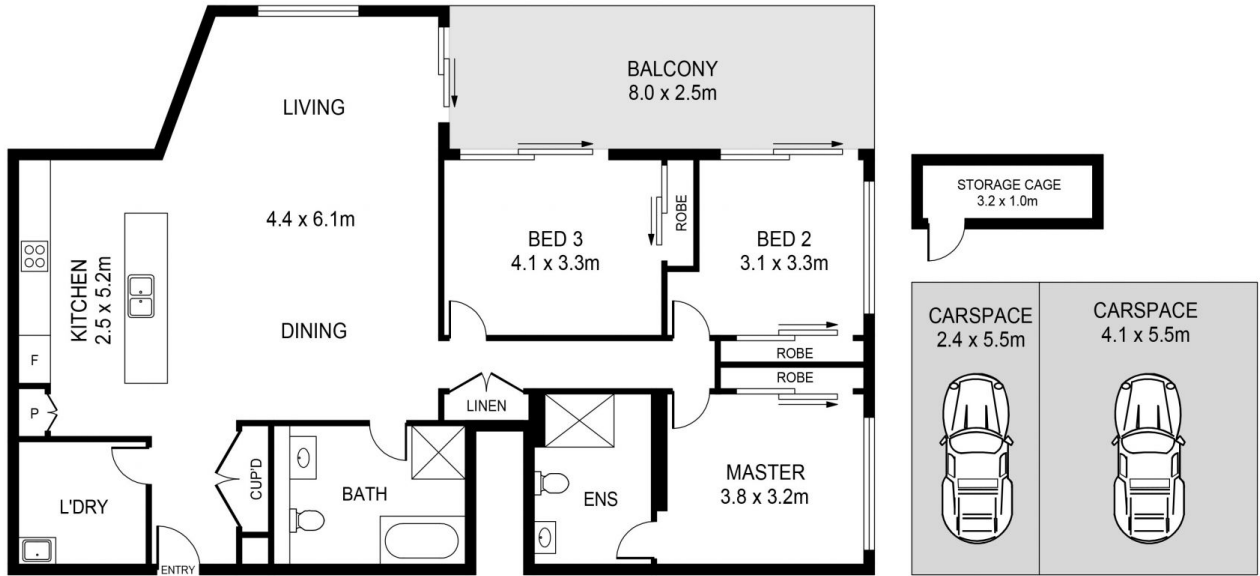
View : <https://www.guardianrealty.com.au/sale/nsw/hills/rouse-hill/residential/unit/7208136>



Sam Schwarz
0423 731 015



Luke Bavaro
0488 093 292



407/10 GRASSLAND STREET, ROUSE HILL



DISCLAIMER:

PLANS SHOWN ARE FOR MARKETING PURPOSES ONLY. ALL DIMENSIONS ARE APPROXIMATE AND NOT TO SCALE. THEY ARE SUBJECT TO ERRORS AND INACCURACIES AND NO LIABILITY WILL BE ACCEPTED. INTERESTED PARTIES SHOULD MAKE THEIR OWN INQUIRIES.

guardian
realty