



77 Castlewood Drive Castle Hill NSW

6  2  2 

Occupying an elevated position within the prestigious Castlewood Estate, this sensational dual level home is an enviable choice for growing families. A commanding façade opens to multiple light-filled living zones on the lower level, including a spacious formal living and dining zone to the right of the entrance complete with the ambience of a fireplace. The enormous kitchen features a large built-in pantry, gas cooktop and plenty of cupboard space. Boasting seamless flow to peaceful outdoor entertaining, the informal meals zone opens to a private and covered patio perfect for spending time with family and friends.

The upper level of the home features five large bedrooms, four of which have integrated storage. An ensuite featuring a double vanity serves the master suite while a generous main bathroom with a separate powder room caters to the other accommodation. An additional rear family zone

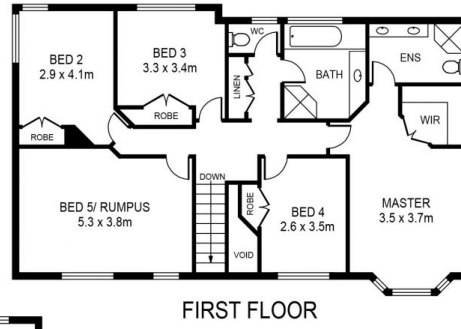
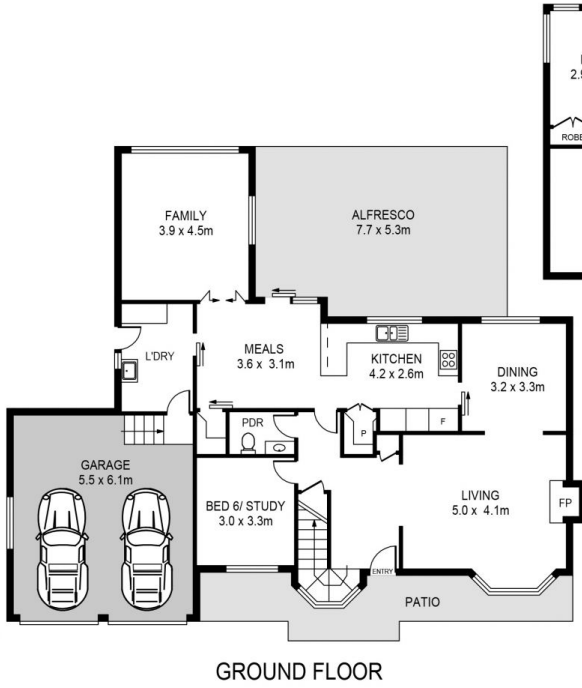
Price : \$ 2,088,000
Land Size : 884 sqm
View : <https://www.guardianrealty.com.au/sale/nsw/hills/castle-hill/residential/house/7183727>



Simon Kowald
0407 433 660



Aaron Godfrey
0422 081 888



77 CASTLEWOOD DRIVE, CASTLE HILL

DISCLAIMER:
 PLANS SHOWN ARE FOR MARKETING PURPOSES ONLY. ALL DIMENSIONS ARE APPROXIMATE AND NOT TO SCALE. THEY ARE SUBJECT TO ERRORS AND INACCURACIES AND NO LIABILITY WILL BE ACCEPTED. INTERESTED PARTIES SHOULD MAKE THEIR OWN INQUIRIES.

