



66 Francis Street Castle Hill NSW

5  2  2 

Spread over a flexible design with generous living spaces, this contemporary family retreat offers the perfect entertainer's haven in central Castle Hill. Idyllically positioned backing a creek and bushland, the immaculate residence boasts multiple living zones including a formal lounge zone on entrance as well as an open plan living and dining zone. Large windows allow an abundance of natural light into the home while also exuding a feeling of a tranquil bush retreat with the views of the surrounding greenery. The modern kitchen features a built-in pantry, plenty of cupboard space, ample bench space and modern stainless-steel cooking appliances. Set at the rear of the home, the opulent master suite enjoys alfresco access, bush views, a walk-in-wardrobe and luxurious ensuite with a free-standing bathtub.

Price : \$ 2,150,000
Land Size : 1190 sqm
View : <https://www.guardianrealty.com.au/sale/nsw/hills/castle-hill/residential/house/7178408>

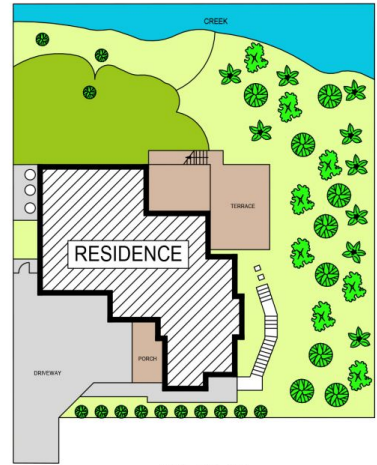
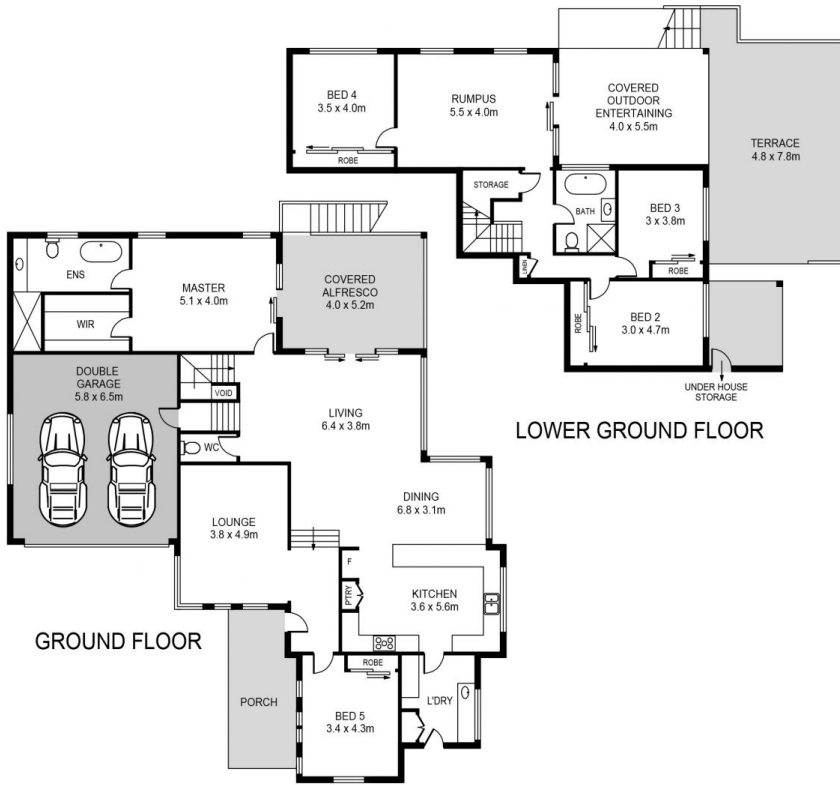


Aaron Godfrey
0422 081 888



Sam Schwarz
0423 731 015

On the lower level of the home, a generous rumpus room



66 FRANCIS STREET, CASTLE HILL

DISCLAIMER:
 PLANS SHOWN ARE FOR MARKETING PURPOSES ONLY. ALL DIMENSIONS ARE APPROXIMATE AND NOT TO SCALE. THEY ARE SUBJECT TO ERRORS AND INACCURACIES AND NO LIABILITY WILL BE ACCEPTED. INTERESTED PARTIES SHOULD MAKE THEIR OWN INQUIRIES.

