



6 Bennett Place Castle Hill NSW

4  2  2 

Set on the high side of a leafy street, this single level residence is full of potential for transformation into an ultimate entertainer. The home boasts light-filled formal and informal living zones with easy transition through two access points to the backyard. Plenty of cupboard space, quality cooking appliances and district views from the window are all key features of the centrally-set kitchen. Established gardens create privacy for the large covered deck, spa and pool in the backyard.

Four well-sized bedrooms with built-in storage make up the formal accommodation of the home. An ensuite gives additional privacy to the master suite while a generous main bathroom with a separate toilet serves the other three bedrooms. This highly-sought address is moments from Castle Towers, metro station, Heritage Park, bus interchange and Oakhill College. It's also only 10 minutes

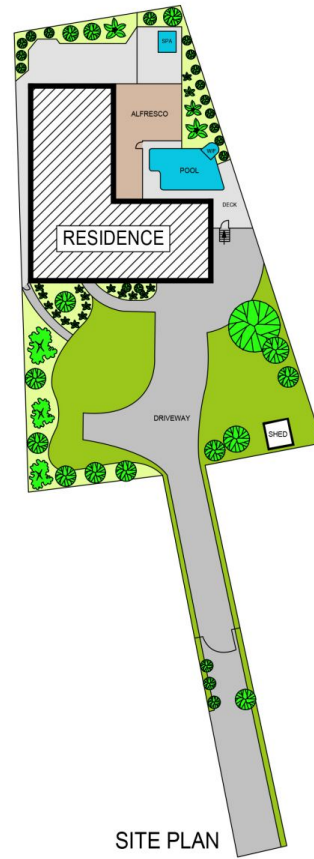
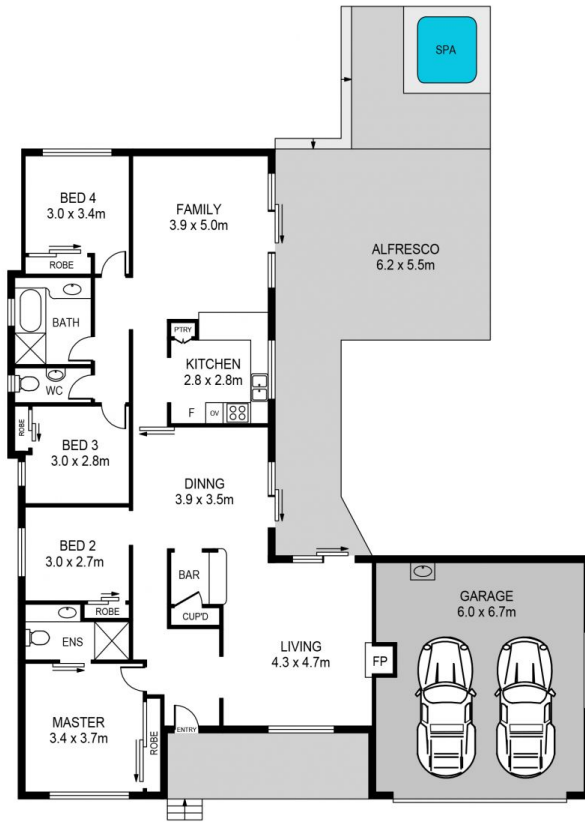
Price : \$ 1,625,000
Land Size : 1059 sqm
View : <https://www.guardianrealty.com.au/sale/nsw/hills/castle-hill/residential/house/7106976>



Aaron Godfrey
0422 081 888



Sam Schwarz
0423 731 015



6 BENNETT PLACE, CASTLE HILL

DISCLAIMER:
 PLANS SHOWN ARE FOR MARKETING PURPOSES ONLY. ALL DIMENSIONS ARE APPROXIMATE AND NOT TO SCALE. THEY ARE SUBJECT TO ERRORS AND INACCURACIES AND NO LIABILITY WILL BE ACCEPTED. INTERESTED PARTIES SHOULD MAKE THEIR OWN INQUIRIES.

guardian
 realty