



5 Yandiah Place Castle Hill NSW

5  3  2 

Quality family home in quiet cul-de-sac

Space and serenity define this dual level home built by Billyard Homes in a prized cul-de-sac. Living areas are spread over four rooms on the ground floor, centred by an updated stone kitchen. It is well equipped for entertaining with wine storage, gas cooking, a central island bench and easy flow out to the patio and pool. Internal feature bricks and wonderful natural light combine for a warm ambience, and there is a wet bar in the rumpus that links to the alfresco.

Bedrooms are upstairs and there is an ensuite and walk-in wardrobe for the master. A generous family bathroom with corner spa bath and twin vanity serves the children's rooms. The fifth bedroom could be used as a study and enjoys tranquil views over the garden. Mature foliage

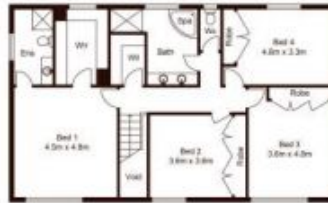
Price : \$ 1,450,000
Land Size : 908 sqm
View : <https://www.guardianrealty.com.au/sale/nsw/hills/castle-hill/residential/house/4701835>



Aaron Godfrey
0422 081 888



Entry Level



Upper Level



Site Plan



Scale shown in metres. All dimensions herein are approximate and gathered from sources believed to be reliable. Whilst every effort is made for the accuracy of our floor plans, interested parties should rely on their own inquiries. Floor Plan by Industrie Media | industriemedia.tv

5 Yandiah Place, Castle Hill



guardian
realty