



12 Ravensbourne Circuit DURAL NSW

4  2  2 

Occupying a neatly presented block in Dural's Elouera Estate, this spacious home is synonymous with carefree family living. Four double bedrooms offer district views and the main bedroom has a walk-through robe to a roomy bathroom with corner bath.

Price : \$ 1,311,000

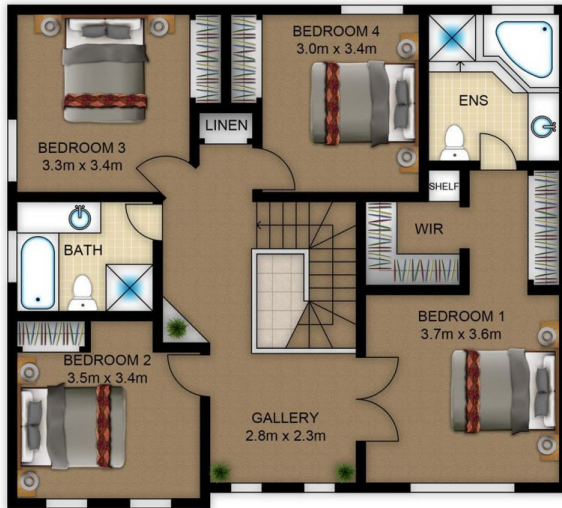
View : <https://www.guardianrealty.com.au/sale/nsw/hills/dural/residential/house/4404492>

On the ground floor, a formal lounge room fronts the street, connecting to the dining room. The kitchen is positioned to capture best of the living areas indoors and out, overlooking the huge family room and meals area. A tiled alfresco space sits at the rear of the residence flowing to a wraparound lawn and fuss-free gardens.

Handy to Cherrybrook and Castle Hill train stations and within easy distance to Round Corner shops, the city bus stop and quality schools are nearby.



Joel Green
0408 293 262



FIRST FLOOR



GROUND FLOOR

