



guardian



3 Pedvin Place ANNANGROVE NSW

4 2 3

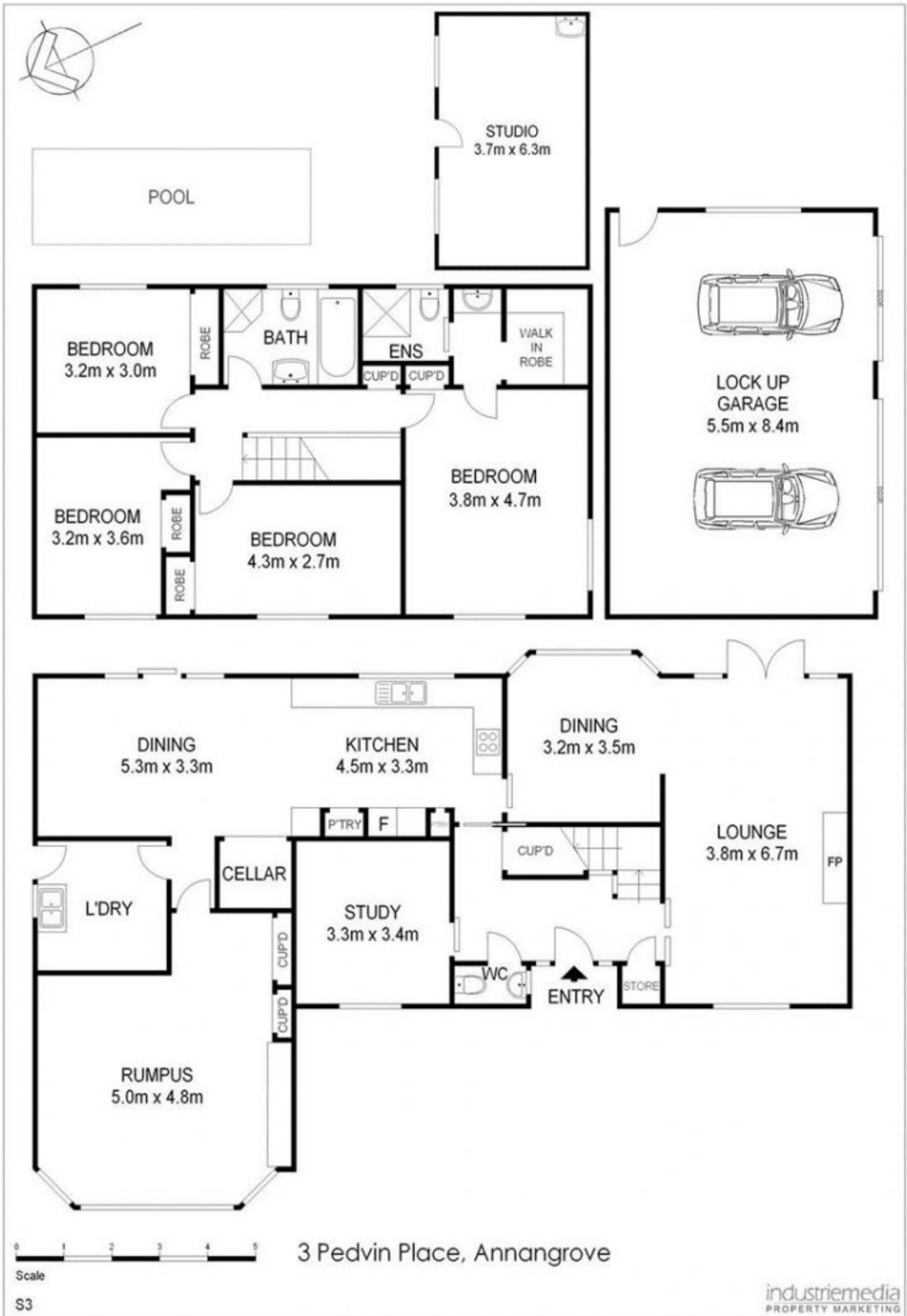
This lovely Georgian-style manor boasts a beautiful Nouvelle kitchen, overlooking a large in-ground pool. The home also has plenty of living space with lounge, dining, meals and rumpus rooms plus ducted air-conditioning and new bathroom.

Situated on 5 acres (with approximately 2 arable) the property also offers a separate studio with power and water connected, triple car garage and sealed driveway. All this set on the high side of a quiet cul-de-sac.

Price : \$ 1,050,000
Land Size : 20234.2821 sqm
View : <https://www.guardianrealty.com.au/sale/nsw/hills/annangrove/residential/house/4403810>



Gavin Weekley
0407 024 600



* Disclaimer : All dimensions are approximate and should only be used as a guide. They are not to scale and no liability will be accepted.