



guardian



4 Vanlam Street SCHOFIELDS NSW

4 3 2

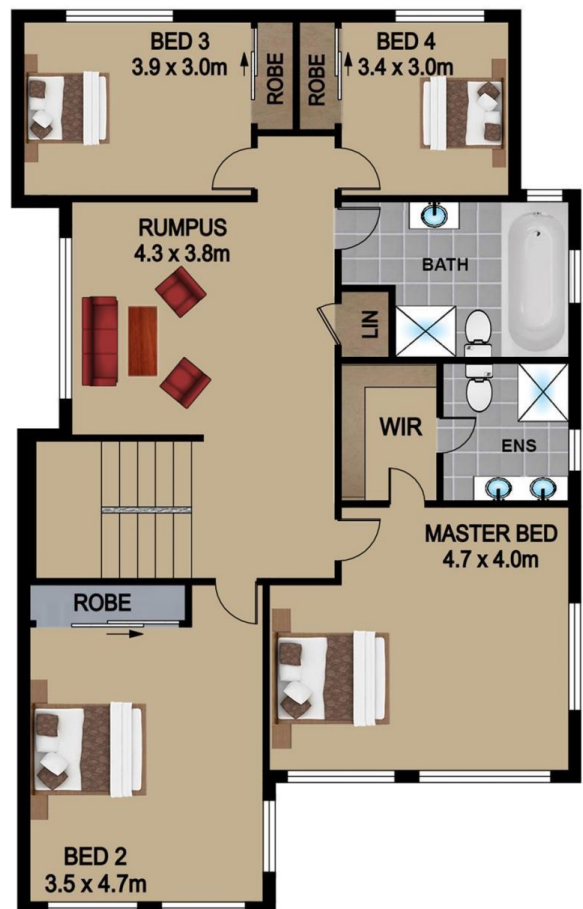
(Vanlam Street is located between Westminster street and Kensington Park Road)

Capturing delightful views to the Blue Mountains, this high set new residence combines contemporary style and family appeal with a popular new residential address close to transport, quality schools and Rouse Hill Town Centre. Built with functionality and relaxed living foremost in mind, a free-flowing layout features an oversized lounge which could serve as home office or kids rumpus, light-filled dining and family with floor to ceiling glass framing the mountain outlook, sleek gas kitchen boasting island bench, stone benchtops and stainless steel appliances, generous upstairs rumpus and four well proportioned bedrooms. The large master bedroom boasts full ensuite and views over forthcoming parkland. A rear verandah offers an ideal place to relax, unwind and take in the views, with a fully

Price : \$ 885,000
Land Size : 403 sqm
View : <https://www.guardianrealty.com.au/sale/nsw/western-sydney/schofields/residential/house/4403550>

<https://www.guardianrealty.com.au>

95 Railway Terrace Schofields NSW
02 8889 2211



4 VANLAM STREET, SCHOFIELDS

DISCLAIMER

PLANS SHOWN ARE FOR MARKETING PURPOSES ONLY, ALL DIMENSIONS ARE APPROXIMATE AND NOT TO SCALE. THEY ARE SUBJECT TO ERRORS AND INACCURACIES AND NO LIABILITY WILL BE ACCEPTED. INTERESTED PARTIES SHOULD MAKE THEIR OWN INQUIRES.